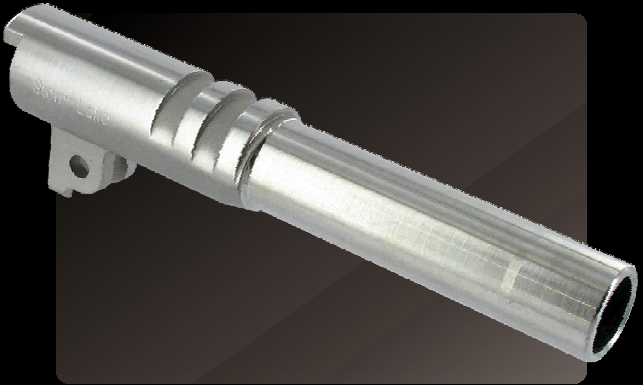


1911



		Model		
		Government	Commander	Officer
Caliber	9x19	•	•	•
	9x23	•	•	•
	38 Super	•	•	•
	357 Sig	•	•	•
	40 S&W	•	•	•
	10mm	•	•	•
	400 CorBon	•	•	•
	40 Super	•	•	•
	45 ACP	•	•	•
Port	0	•	•	•
	2	•	•	•
Thread	1/2-28	•	•	
	1/2-32	•	•	
	9/16-24	•	•	
	9/16-28	•	•	
	M14.5x1 LH	•	•	
	.575-40	•	•	
	.578-28	•	•	
	M16x1 LH *	•	•	
	M16x1 RH *	•	•	
Length	3.65			•
	4.29		•	
	4.99		•	
	5.055	•		
	5.755	•		
	6.055	•		
	6.755	•		
	7.055	•		
Ramp	Unramped	•	•	•
	Clark/Para	•	•	•
	Wilson/Nowlin	•	•	•
Fit	Drop In	•	•	
	Drop In Bull	•	•	•
	Oversize	•	•	
	Oversize Bull	•	•	•
Kit	Link and Pin	•	•	•
	Bushing	•	•	•
	Thread Protector	•	•	

Machined from certified 416R stainless steel for superior strength, durability, and accuracy. Barrels are match grade, hardened to 40-42 HRC and cut broach rifled. Officer, Commander, and Government models available. Standard bushing style or bull barrel available for Commander and Government models. Extended length and threaded options are available. Oversize and drop-in options are available, as well as kit option combinations of link, pin, and bushing. Ramp options include nonramped, Wilson/Nowlin, and Para ramp. Check with the manufacturer of your attachment to verify thread option before ordering.