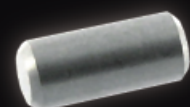
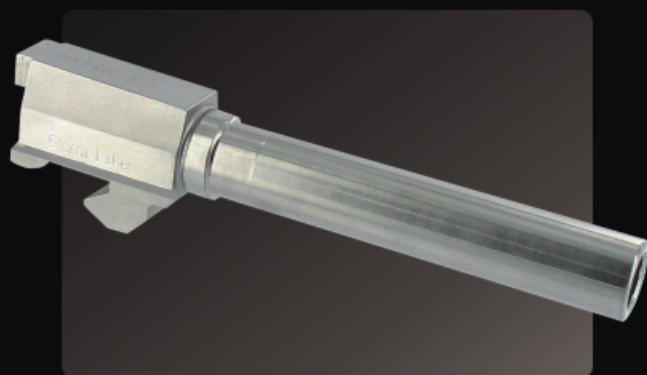


SIG SAUER®

ACCESSORIES



BUSHING

Machined from hardened stainless steel and match fit to Storm Lake Barrels. Government, Commander, and Officer. Available in Drop-In or Oversize.

LINK

Machined from hardened stainless steel and match fit to Storm Lake Barrels.

PIN

Machined from hardened stainless steel and match fit to Storm Lake Barrels. Tapered ends for easy press fit installation.

THREAD PROTECTOR

Machined from hardened stainless steel and match fit to Storm Lake Barrels. Knurled for easy hand installation and removal. Available in 1/2-28, 1/2-32, 9/16-24, 9/16-28, M13.5x1 LH, M14.5x1 LH, .575-40, .578-28, M16x1 RH, M16x1 LH

Storm Lake Barrels also offers a wide range of accessories from shooting targets to Storm Lake Apparel. Please visit our web site for more information on accessories.

WWW.STORMLAKEBARREL.COM

DOMESTIC SALES:

sales@stormlakebarrel.com
866.392.1654 (toll free)

INTERNATIONAL SALES:

export@stormlakebarrel.com

TECHNICAL SUPPORT:

support@stormlakebarrel.com
865.988.8933

HOURS:

SALES: 8:00 am - 5:00 pm EST
Monday - Friday

SUPPORT: 8:30 am - 5:00 pm EST
Monday - Friday



STORMLAKE BARRELS™

5900 HIGHWAY 321 N
LENOIR CITY, TN 37771

OFFICE: 865.988.8933
FAX: 865.271.9441

WWW.STORMLAKEBARREL.COM

All trademarks, trademark names or logos mentioned or used are the property of their respective owners.



STORMLAKE BARRELS™

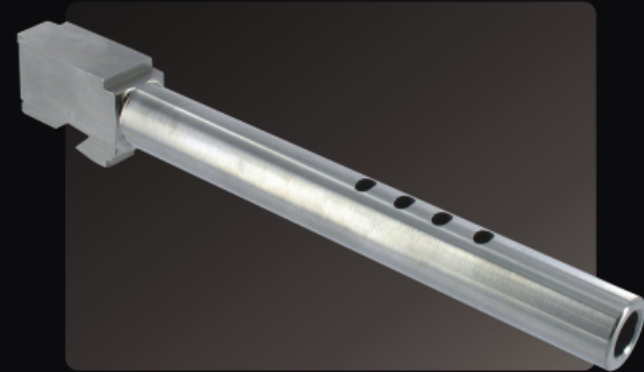
| Model | Caliber | | | | | Ports | | Thread | | | | | |
|----------------|---------|----------|--------|-------|-------|-------|---|--------|--------|------------|------------|---------|---------|
| | 9mm | 9mm Conv | 357Sig | 40S&W | 45ACP | 0 | 2 | 1/2-28 | 1/2-32 | M13.5x1 LH | M14.5x1 LH | .575-40 | .578-28 |
| P220 Full Size | | | | | | | | | | | | | |
| P220 Match | | | | | | | | | | | | | |
| P220 Carry | | | | | | | | | | | | | |
| P220 Compact | | | | | | | | | | | | | |
| P226 | • | | | | | | | | | | | | |
| P226 X-Five | • | | | | | | | | | | | | |
| P226 | | • | • | • | | | | | | | | | |
| P226 X-Five | • | | | | | | | | | | | | |
| P229 | • | | | | | | | | | | | | |
| P229 | | • | • | • | | | | | | | | | |

Machined from certified 416R stainless steel for superior strength, durability, and accuracy. Barrels are match grade, hardened to 40-42 HRC and cut broach rifled to shoot jacketed or lead bullets. All barrels are chambered for full case support. All Sig barrels are drop in and will only occasionally require modification to fit. Extended lengths are available, as well as ported and threaded options. Two port options have a 0.70" barrel extension with the ports extending beyond the end of the slide. Check with the manufacturer of your attachment to verify thread option before ordering. 40S&W - to - 9MM conversion barrels require the use of a 9MM magazine.

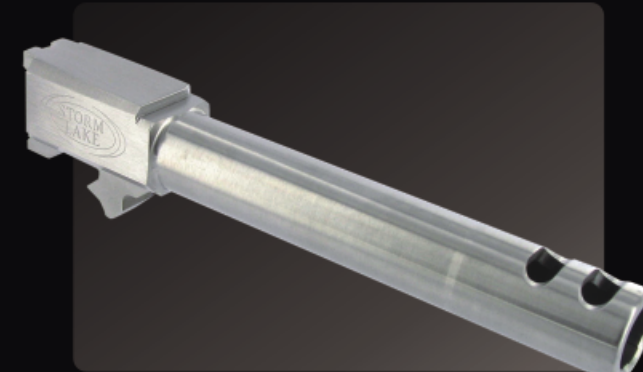
1911



GLOCK®



SPRINGFIELD®



SMITH & WESSON®



| | Model | Model | | |
|---------|------------------|------------|-----------|---------|
| | | Government | Commander | Officer |
| Caliber | 9x19 | • | • | • |
| | 9x23 | • | • | • |
| | 38 Super | • | • | • |
| | 357 Sig | • | • | • |
| | 40 S&W | • | • | • |
| | 10mm | • | • | • |
| | 400 CorBon | • | • | • |
| | 40 Super | • | • | • |
| | 45 ACP | • | • | • |
| | 45 ACP | • | • | • |
| Port | 0 | • | • | • |
| | 2 | • | • | • |
| Thread | 1/2-28 | • | • | • |
| | 1/2-32 | • | • | • |
| | 9/16-24 | • | • | • |
| | 9/16-28 | • | • | • |
| | M14.5x1 LH | • | • | • |
| | .575-40 | • | • | • |
| | .578-28 | • | • | • |
| | M16x1 LH * | • | • | • |
| | M16x1 RH * | • | • | • |
| | 3.65 | • | • | • |
| Length | 4.29 | • | • | • |
| | 4.99 | • | • | • |
| | 5.055 | • | • | • |
| | 5.755 | • | • | • |
| | 6.055 | • | • | • |
| | 6.755 | • | • | • |
| Ramp | 7.055 | • | • | • |
| | Unramped | • | • | • |
| | Clark/Para | • | • | • |
| | Wilson/Nowlin | • | • | • |
| Fit | Drop In | • | • | • |
| | Drop In Bull | • | • | • |
| | Oversize | • | • | • |
| | Oversize Bull | • | • | • |
| Kit | Link and Pin | • | • | • |
| | Bushing | • | • | • |
| | Thread Protector | • | • | • |

Machined from certified 416R stainless steel for superior strength, durability, and accuracy. Barrels are match grade, hardened to 40-42 HRC and cut broach rifled. Officer, Commander, and Government models available. Standard bushing style or bull barrel available for Commander and Government models. Extended length and threaded options are available. Oversize and drop-in options are available, as well as kit option combinations of link, pin, and bushing. Ramp options include nonramped, Wilson/Nowlin, and Para ramp. Check with the manufacturer of your attachment to verify thread option before ordering.

| Model | Caliber | | | | | | Ports | | | | Thread | | | | | | | | | | | |
|-------|---------|----------|--------|-------|------|------------|--------|---|---|---|--------|--------|--------|------------|---------|---------|------------|---------|---------|----------|----------|---|
| | 9mm | 9mm Conv | 357Sig | 40S&W | 10mm | 400 CorBon | 45 ACP | 0 | 2 | 4 | 6 | 1/2-28 | 1/2-32 | M13.5x1 LH | 9/16-24 | 9/16-28 | M14.5x1 LH | .575-40 | .578-28 | M16x1 LH | M16x1 RH | |
| 17 | • | • | • | • | • | • | • | • | • | • | • | • | • | • | • | • | • | • | • | • | • | • |
| 17L | • | • | • | • | • | • | • | • | • | • | • | • | • | • | • | • | • | • | • | • | • | • |
| 19 | • | • | • | • | • | • | • | • | • | • | • | • | • | • | • | • | • | • | • | • | • | • |
| 20 | • | • | • | • | • | • | • | • | • | • | • | • | • | • | • | • | • | • | • | • | • | • |
| 20SF | • | • | • | • | • | • | • | • | • | • | • | • | • | • | • | • | • | • | • | • | • | • |
| 21 | • | • | • | • | • | • | • | • | • | • | • | • | • | • | • | • | • | • | • | • | • | • |
| 21SF | • | • | • | • | • | • | • | • | • | • | • | • | • | • | • | • | • | • | • | • | • | • |
| 22 | • | • | • | • | • | • | • | • | • | • | • | • | • | • | • | • | • | • | • | • | • | • |
| 23 | • | • | • | • | • | • | • | • | • | • | • | • | • | • | • | • | • | • | • | • | • | • |
| 24 | • | • | • | • | • | • | • | • | • | • | • | • | • | • | • | • | • | • | • | • | • | • |
| 26 | • | • | • | • | • | • | • | • | • | • | • | • | • | • | • | • | • | • | • | • | • | • |
| 27 | • | • | • | • | • | • | • | • | • | • | • | • | • | • | • | • | • | • | • | • | • | • |
| 29 | • | • | • | • | • | • | • | • | • | • | • | • | • | • | • | • | • | • | • | • | • | • |
| 29SF | • | • | • | • | • | • | • | • | • | • | • | • | • | • | • | • | • | • | • | • | • | • |
| 30 | • | • | • | • | • | • | • | • | • | • | • | • | • | • | • | • | • | • | • | • | • | • |
| 30SF | • | • | • | • | • | • | • | • | • | • | • | • | • | • | • | • | • | • | • | • | • | • |
| 31 | • | • | • | • | • | • | • | • | • | • | • | • | • | • | • | • | • | • | • | • | • | • |
| 32 | • | • | • | • | • | • | • | • | • | • | • | • | • | • | • | • | • | • | • | • | • | • |
| 33 | • | • | • | • | • | • | • | • | • | • | • | • | • | • | • | • | • | • | • | • | • | • |
| 34 | • | • | • | • | • | • | • | • | • | • | • | • | • | • | • | • | • | • | • | • | • | • |
| 35 | • | • | • | • | • | • | • | • | • | • | • | • | • | • | • | • | • | • | • | • | • | • |

Machined from certified 416R stainless steel for superior strength, durability, and accuracy. Barrels are match grade, hardened to 40-42 HRC and cut broach rifled to shoot jacketed or lead bullets. All barrels are chambered for full case support. All Glock barrels are drop in and will only occasionally require modification to fit. Extended lengths are available, as well as ported and threaded options. Two port options are extended barrels with ports beyond the end of the slide (available for models 17, 19, 20, 21, 22, 23, 26, 27, 29, 30, 31, 32, 33, 34, 35).

| Model | Caliber | | | | | Ports | | | Thread | | | | | | | | |
|-------------|---------|----------|--------|-------|-------|-------|---|---|--------|--------|------------|---------|---------|------------|---------|---------|---|
| | 9mm | 9mm Conv | 357Sig | 40S&W | 45ACP | 0 | 2 | 4 | 1/2-28 | 1/2-32 | M13.5x1 LH | 9/16-24 | 9/16-28 | M14.5x1 LH | .575-40 | .578-28 | |
| XD Compact | • | • | • | • | • | • | • | • | • | • | • | • | • | • | • | • | • |
| XD Compact | • | • | • | • | • | • | • | • | • | • | • | • | • | • | • | • | • |
| XD Compact | • | • | • | • | • | • | • | • | • | • | • | • | • | • | • | • | • |
| XD Service | • | • | • | • | • | • | • | • | • | • | • | • | • | • | • | • | • |
| XD Service | • | • | • | • | • | • | • | • | • | • | • | • | • | • | • | • | • |
| XD Service | • | • | • | • | • | • | • | • | • | • | • | • | • | • | • | • | • |
| XD (m) 3.8 | • | • | • | • | • | • | • | • | • | • | • | • | • | • | • | • | • |
| XD (m) 3.8 | • | • | • | • | • | • | • | • | • | • | • | • | • | • | • | • | • |
| XD (m) 4.5 | • | • | • | • | • | • | • | • | • | • | • | • | • | • | • | • | • |
| XD (m) 4.5 | • | • | • | • | • | • | • | • | • | • | • | • | • | • | • | • | • |
| XD Tactical | • | • | • | • | • | • | • | • | • | • | • | • | • | • | • | • | • |
| XD Tactical | • | • | • | • | • | • | • | • | • | • | • | • | • | • | • | • | • |
| XD Tactical | • | • | • | • | • | • | • | • | • | • | • | • | • | • | • | • | • |
| EMP | • | • | • | • | • | • | • | • | • | • | • | • | • | • | • | • | • |

Machined from certified 416R stainless steel for superior strength, durability, and accuracy. Barrels are match grade, hardened to 40-42 HRC and cut broach rifled to shoot jacketed or lead bullets. All barrels are chambered for full case support. All XD and EMP barrels are drop in and will only occasionally require a gunsmith to fit. Extended lengths are available, as well as ported and threaded options. All models have a 2-port extended barrel option with the ports extending beyond the end of the slide. The XD(m) 40S&W-to-9mm conversion barrel is not compatible with the XD(m) 9mm model.

| Model | Caliber | | | | | Ports | | | Thread | | | | | | | | |
|--------------|---------|----------|--------|-------|-------|-------|---|---|--------|--------|------------|---------|---------|------------|---------|---------|---|
| | 9mm | 9mm Conv | 357Sig | 40S&W | 45ACP | 0 | 2 | 4 | 1/2-28 | 1/2-32 | M13.5x1 LH | 9/16-24 | 9/16-28 | M14.5x1 LH | .575-40 | .578-28 | |
| M&P Compact | • | • | • | • | • | • | • | • | • | • | • | • | • | • | • | • | • |
| M&P Compact | • | • | • | • | • | • | • | • | • | • | • | • | • | • | • | • | • |
| M&P Compact | • | • | • | • | • | • | • | • | • | • | • | • | • | • | • | • | • |
| M&P Midsize | • | • | • | • | • | • | • | • | • | • | • | • | • | • | • | • | • |
| M&P Fullsize | • | • | • | • | • | • | • | • | • | • | • | • | • | • | • | • | • |
| M&P Fullsize | • | • | • | • | • | • | • | • | • | • | • | • | • | • | • | • | • |
| M&P Fullsize | • | • | • | • | • | • | • | • | • | • | • | • | • | • | • | • | • |
| M&P L | • | • | • | • | • | • | • | • | • | • | • | • | • | • | • | • | • |
| M&P Pro | • | • | • | • | • | • | • | • | • | • | • | • | • | • | • | • | • |
| M&P Pro | • | • | • | • | • | • | • | • | • | • | • | • | • | • | • | • | • |

Machined from certified 416R stainless steel for superior strength, durability, and accuracy. Barrels are match grade, hardened to 40-42 HRC and cut broach rifled to shoot jacketed or lead bullets. All barrels are chambered for full case support. All Smith & Wesson M&P barrels are drop in and will only occasionally require modification to fit. Extended lengths are available, as well as ported and threaded options. Two port options are extended barrels with ports beyond the end of the slide. Check with the manufacturer of your attachment to verify thread option before ordering. 40S&W-to-9mm conversion barrels require the use of a 9mm magazine.